

# NATURAL GAS



MAY 11, 2017

## Prior Day's NYMEX Jun-17 Contract (CT)



## NYMEX NG Futures

Month	Close	Change
Jun-17	3.292	0.065
Jul-17	3.380	0.065
Aug-17	3.412	0.063
Sep-17	3.394	0.061
Oct-17	3.414	0.059
Nov-17	3.461	0.056
Dec-17	3.580	0.053
Jan-18	3.655	0.054
Feb-18	3.618	0.052
Mar-18	3.520	0.042
Apr-18	2.955	0.016
May-18	2.888	0.011
Jun-18	2.912	0.009
Jul-18	2.936	0.007
Aug-18	2.942	0.007
Sep-18	2.918	0.008
Oct-18	2.934	0.009
Nov-18	2.984	0.009
Dec-18	3.118	0.008
Jan-19	3.213	0.009
Feb-19	3.194	0.009
Mar-19	3.121	0.009
Apr-19	2.717	(0.006)
May-19	2.675	(0.006)
1YR Strip	3.381	0.050
2017	3.419	0.060
5YR Strip	2.992	0.008

## IN THE NEWS

**Williams Turns to Trump for Help Approving Delayed Gas Pipeline** — Bloomberg reports: A year after New York rejected a key permit for the \$925 million Constitution natural gas pipeline, developer Williams Co. is appealing to a higher authority: the White

- **Williams Turns to Trump for Help Approving Delayed Gas Pipeline**
- **U.S. Natural Gas Futures Gain With Weather, Supply In Focus**

House. Williams and labor unions are pressing President Donald Trump's administration for a U.S. Army Corps of Engineers permit after the state refused to certify the project, Alan Armstrong, the Tulsa, Oklahoma-based company's chief executive officer, said Wednesday in an interview at Bloomberg headquarters in New York. The pipeline would link supplies from the Marcellus shale basin, America's biggest by volume, to markets in the Northeast. Although New York has not issued a water-quality certificate for the pipeline, the Army Corps can issue such permits if the state doesn't act within a "reasonable" time period, Armstrong said. Williams also supports a broader Trump administration effort to reduce the "regulatory morass" facing pipeline development, he said. For more on this story visit [bloomberg.com](http://bloomberg.com) or click the following link <https://bloom.bg/2r2Og2B>

**U.S. Natural Gas Futures Gain With Weather, Supply In Focus** — Seeking Alpha reports: U.S. natural gas futures were higher for the second session in a row on Wednesday, as updated weather forecasting models point to stronger demand for the fuel. Cool conditions are expected to linger over the northeastern U.S. through early next week. Overall, natural gas demand will remain stronger than normal, driven primarily by the cooler than normal northeastern U.S. For more visit [seekingalpha.com](http://seekingalpha.com) or click the following link <http://bit.ly/2plcxDP>

## 12 MONTH CANDLESTICK (WEEKLY)



## Prompt Natural Gas (NG) Daily Sentiment

**BULLISH**



RESISTANCE  
3.36 & 3.43  
SUPPORT  
3.28 & 3.21

## Trading Summary

### NATURAL GAS

Futures	Close	Change
NG	3.292	0.065
Volume	607,544	(595,922)
Open Int.	1,544,618	15,596

### CRUDE AND GASOLINE

Futures	Close	Change
Crude	47.33	1.45
RBOB	1.5396	0.0501
Crude/NG	14.38	0.16

### METALS

Futures	Close	Change
Gold	1,218.90	3.10

### EQUITIES

Exchange	Close	Change
DOW	20,943.11	(32.67)
S&P 500	2,294.62	(102.30)

### CURRENCY

Currency	Close	Change
EUR/USD	1.0882	(0.0008)
USD/CND	1.3721	0.0051

## Contact Us



**Mansfield Energy Corp**  
1025 Airport Pkwy  
Gainesville, GA 30501  
  
[www.mansfield.energy](http://www.mansfield.energy)  
[info@mansfieldoil.com](mailto:info@mansfieldoil.com)

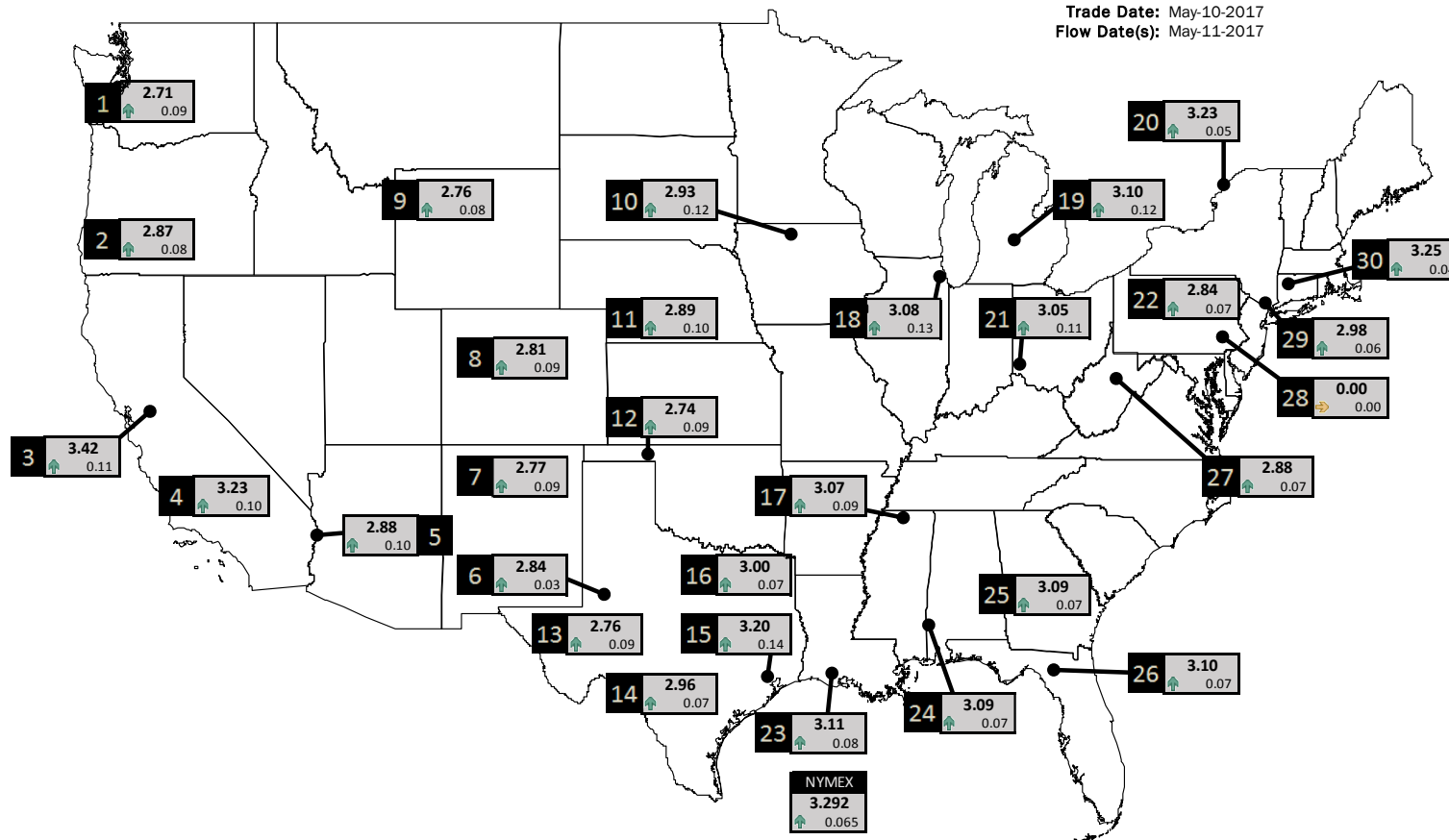
Phone: (800) 695-6626



# NATURAL GAS NEWS

## PHYSICAL SPOT NATURAL GAS PRICE MAP

Trade Date: May-10-2017  
Flow Date(s): May-11-2017



ID	DAILY INDEX	PRICE	CHANGE
1	Stanfield	2.71	0.09
2	Malin	2.87	0.08
3	PG&E - Citygate	3.42	0.11
4	Socal-Citygate	3.23	0.10
5	SoCal Border	2.88	0.10
6	Waha	2.84	0.03
7	EPSJ Blanco Pool	2.77	0.09
8	Opal Plant Tailgate	2.81	0.09
9	NWP-Wyoming	2.76	0.08
10	Ventura	2.93	0.12

ID	DAILY INDEX	PRICE	CHANGE
11	NGPL-Midcont Pool	2.89	0.10
12	Panhandle	2.74	0.09
13	EP-Permian	2.76	0.09
14	TGP-ZO	2.96	0.07
15	Houston Ship Channel	3.20	0.14
16	NGPL-TXOK	3.00	0.07
17	TETCO-M1 30	3.07	0.09
18	Chicago Citygates	3.08	0.13
19	Michcon	3.10	0.12
20	Iroquois (into)	3.23	0.05

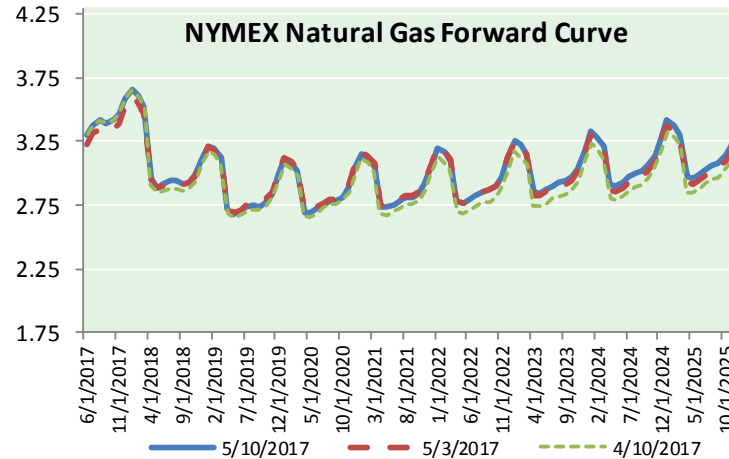
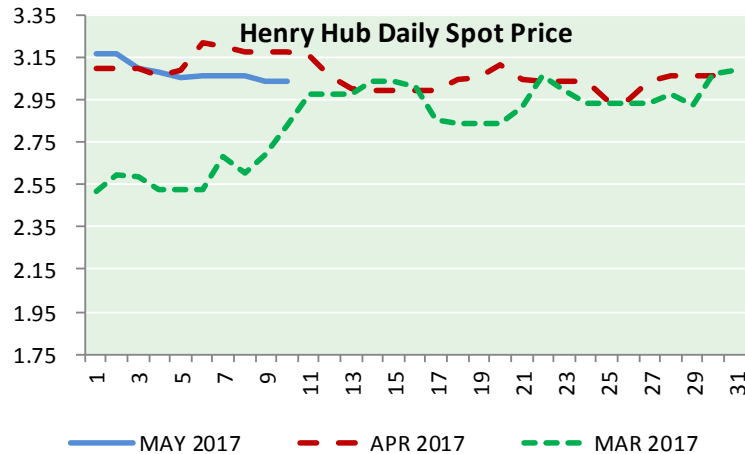
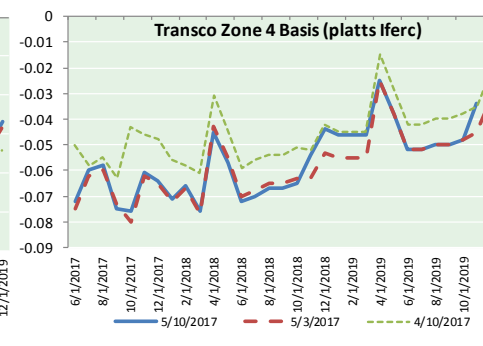
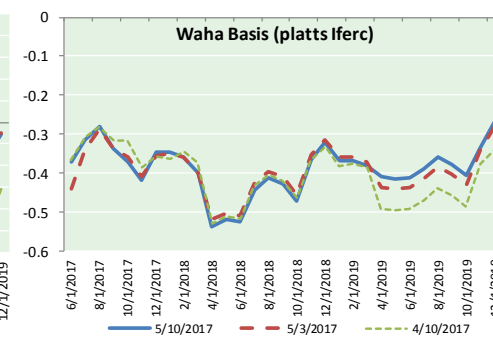
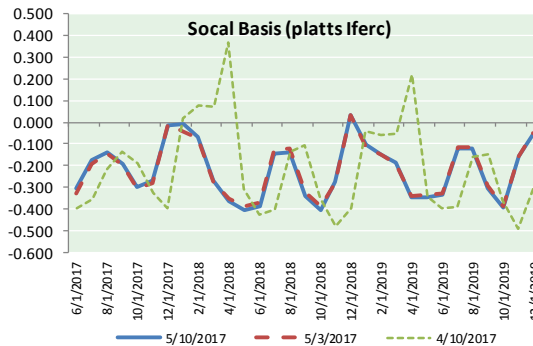
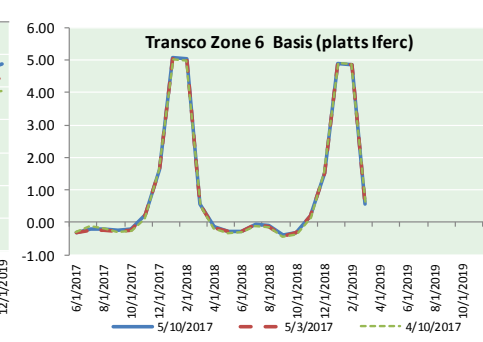
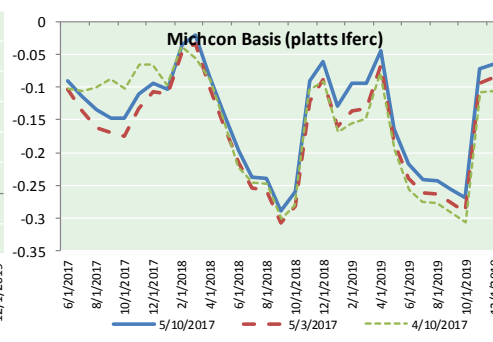
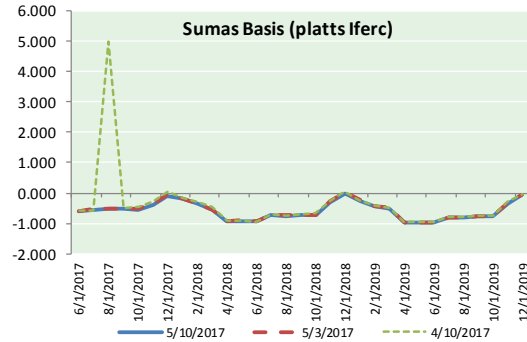
ID	DAILY INDEX	PRICE	CHANGE
21	REX E-ANR	3.05	0.11
22	Leidy-Transco	2.84	0.07
23	Henry	3.11	0.08
24	Transco-85	3.09	0.07
25	Sonat-ZO South	3.09	0.07
26	FGT-Z3	3.10	0.07
27	Dominion-South	2.88	0.07
28	Transco-Z6 (non-NY)	0.00	0.00
29	Transco-Z6 (NY)	2.98	0.06
30	Iroquois-Z2	3.25	0.04



DISCLAIMER: The content herein is privileged and confidential. Content is presented for informational purposes and is a reflection of the market opinions of its authors subject to change without notice. Content is derived from sources believed to be accurate at the time of release but carries no guarantee of accuracy or completeness. Mansfield Energy Corp and its clients may or may not take positions similar or opposite those discussed herein. The reader should realize that the trading of commodities involves risk, and the reader assumes all responsibility for the risk of financial losses.



NATURAL GAS BASIS FUTURES, HENRY HUB SPOT PRICES, AND FORWARD CURVE



CME NG Option Prices

ATM Call

Month	Strike	Close	Imp Vol
Jun-17	3.300	0.091	33.7
Jul-17	3.400	0.155	31.9
Aug-17	3.450	0.193	31.9
Sep-17	3.400	0.246	31.9
Oct-17	3.450	0.256	30.9
Nov-17	3.500	0.286	30.9
Dec-17		3.300	0.1
Jan-18	0.000		
Feb-18			
Mar-18			
Apr-18			
May-18			
Jun-18			
Jul-18			
Aug-18			
Sep-18			
Oct-18			

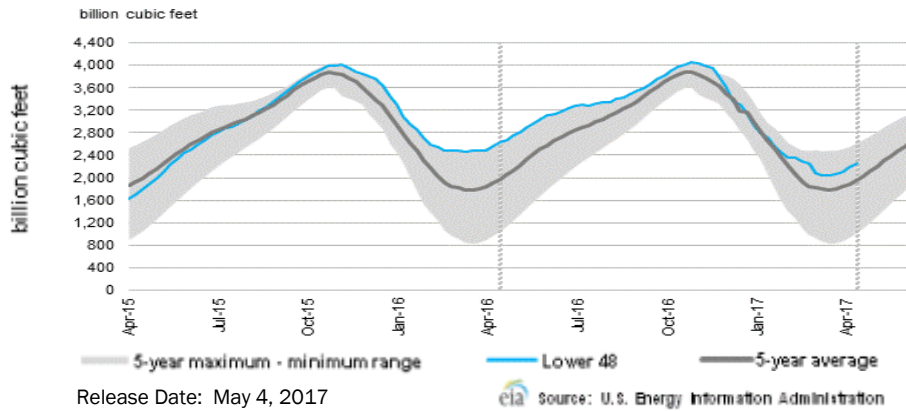
We are having technical issues with our Options data feed. We're working on correcting the issue.

CME NG Option Prices

ATM Put

Month	Strike	Close	Imp Vol
Jun-17	3.300	0.094	37.5
Jul-17	3.400	0.176	35.6
Aug-17	3.450		
Sep-17	3.400	0.245	33.7
Oct-17	3.450		
Nov-17	3.500	0.329	33.7
Dec-17			
Jan-18	0.000		
Feb-18			
Mar-18			
Apr-18			
May-18			
Jun-18			
Jul-18			
Aug-18			
Sep-18			
Oct-18			

WEEKLY GAS IN UNDERGROUND STORAGE WITH 5-YR RANGE



Rig Count

Report Date: May 5, 2017

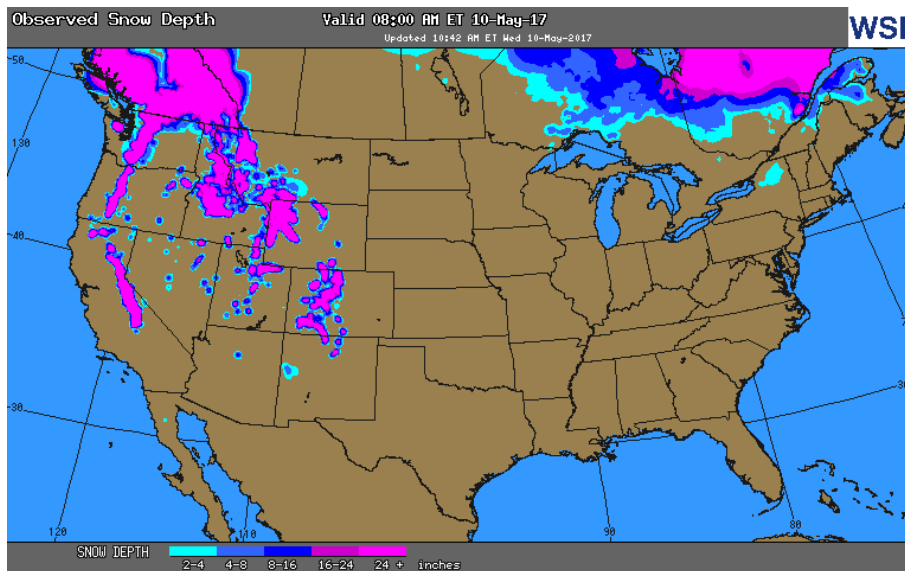
	Total	Change
US -	877	+7
CN -	82	(3)

EIA Storage History for 18th Week of Year (Due to Report May 11)

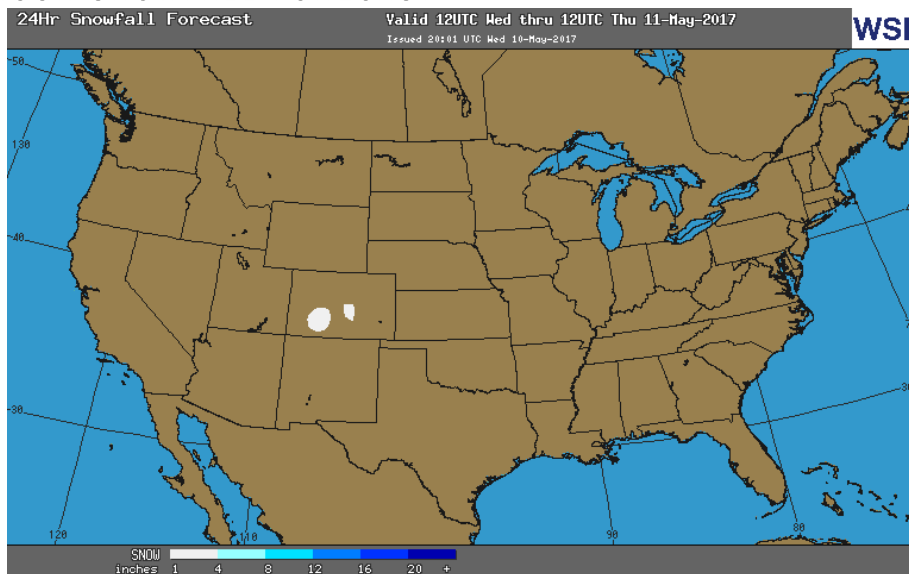
Year	Week Ending	BCF
2013	May 03, 2013	+90
2014	May 02, 2014	+74
2015	May 01, 2015	+74
2016	Apr 29, 2016	+68

ESTIMATE — +52

OBSERVED SNOW DEPTH



24 HOUR SNOWFALL FORECAST



Total Working Gas In Storage

2,256 BCF

- +67 BCF (LAST WEEK)
- (359) BCF (LAST YEAR)
- +303 BCF (5-YR AVG)

U.S. Natural Gas Supply Gas Week 4/27-5/3

Average daily values (BCF/D):  
 Last Year (BCF/d)  
 Dry Production — +72.3  
 Total Supply — +78.5  
 Last Week (BCF/d)  
 Dry Production — +69.8  
 Total Supply — +74.8

[NEXT REPORT ON MAY 11]

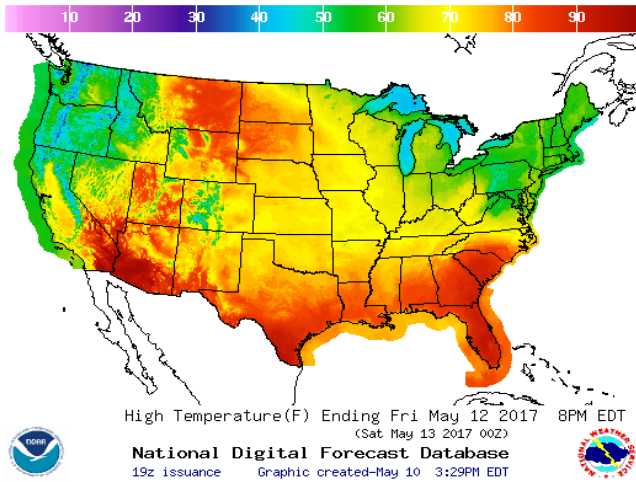
U.S. Natural Gas Demand Gas Week 4/27-5/3

Average daily values (BCF/D):  
 Last Year (BCF/d)  
 Power — +26.1  
 Total Demand — +73.0  
 Last Week (BCF/d)  
 Power — +22.7  
 Total Demand — +67.2

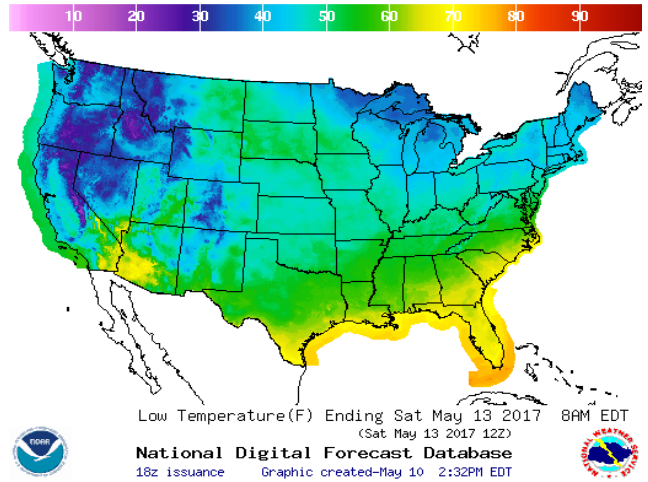
[NEXT REPORT ON MAY 11]

WEATHER – HIGH / LOW TEMPERATURE TOMORROW

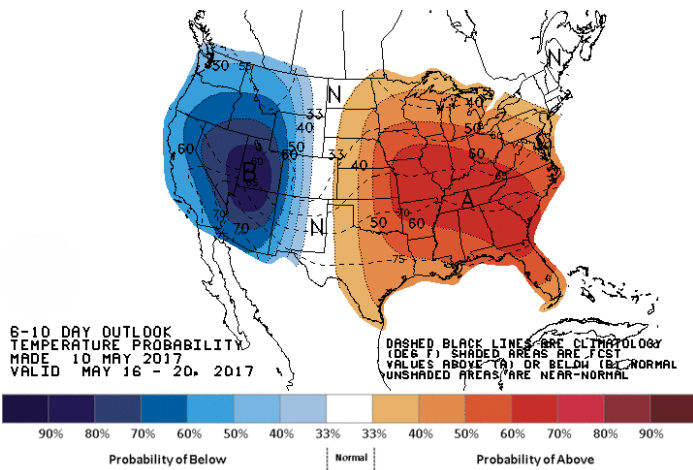
HIGH Temperature



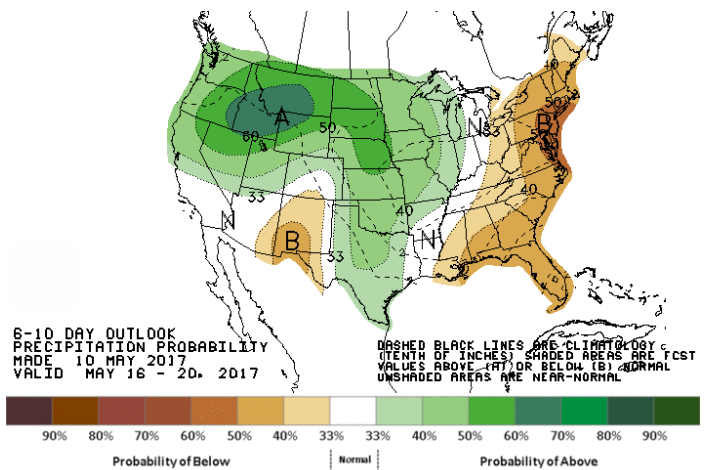
LOW Temperature



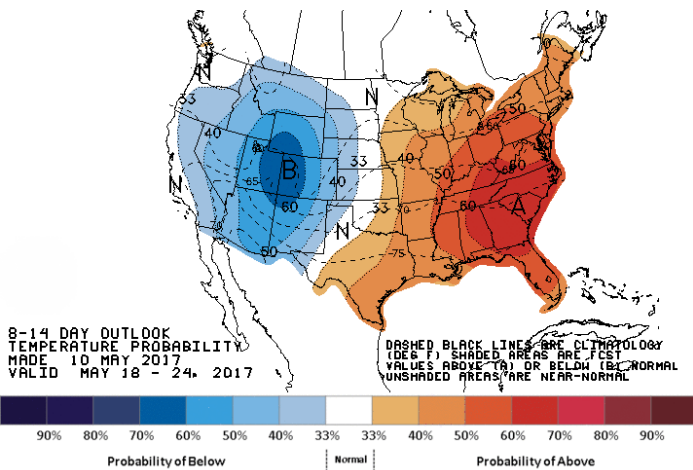
WEATHER – 6 TO 10 DAY OUTLOOK – NOAA  
Temperature



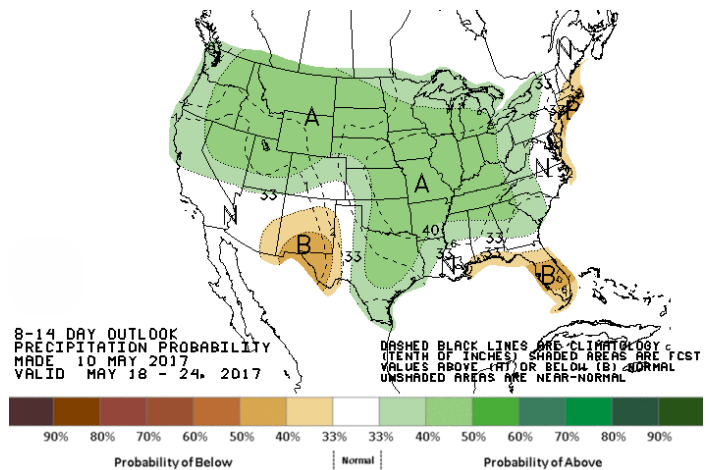
Precipitation



WEATHER – 8 TO 14 DAY OUTLOOK – NOAA  
Temperature

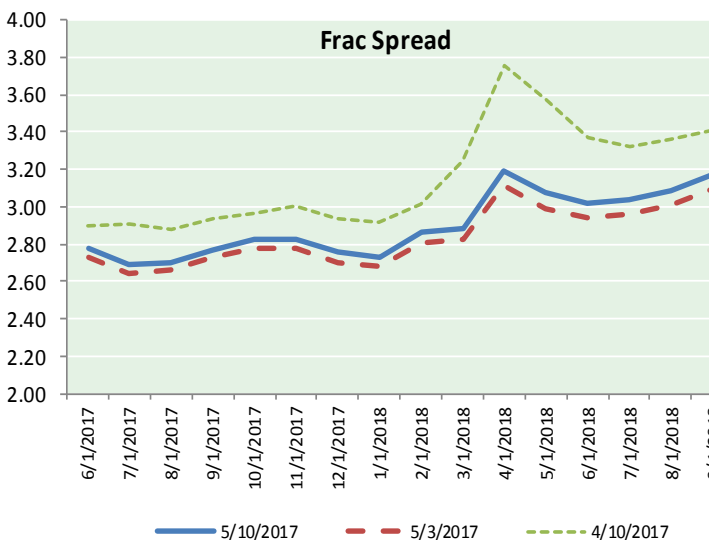
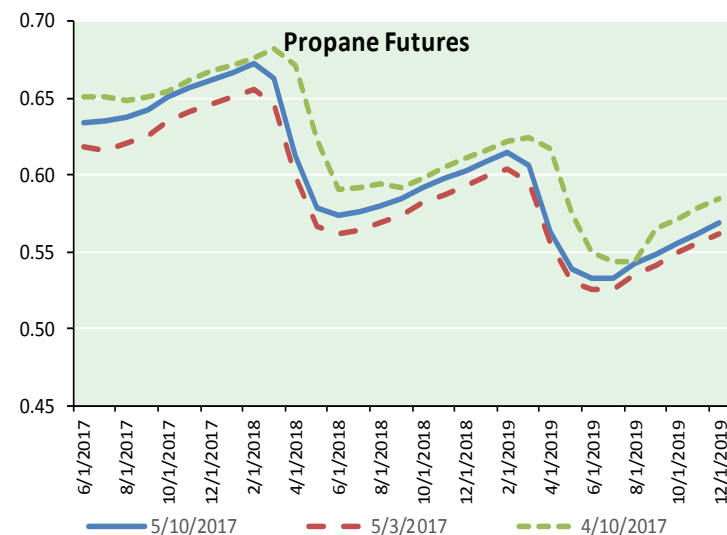
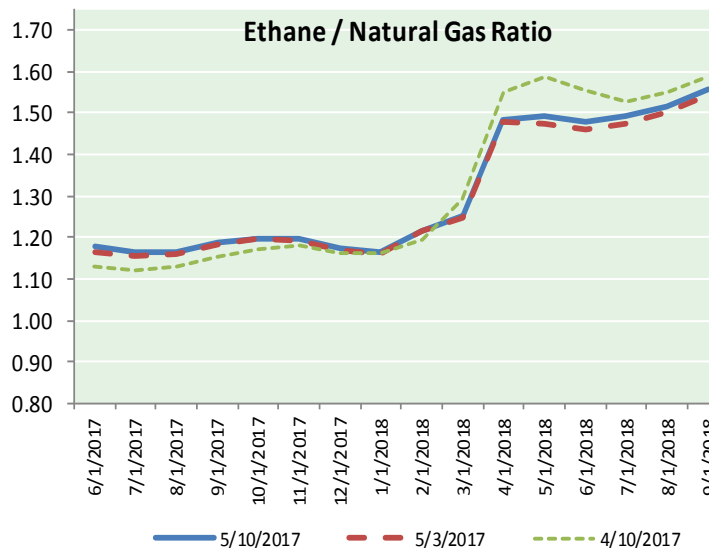
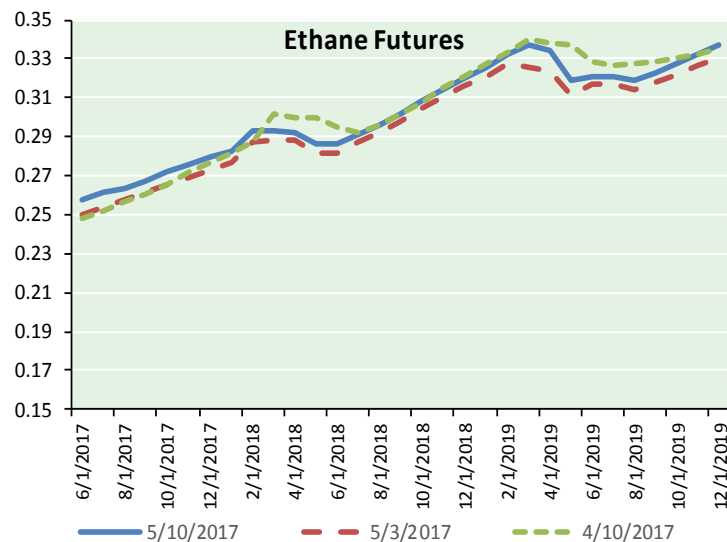


Precipitation





ETHANE FUTURES, NG/ETHANE RATIO, PROPANE FUTURES, AND THE FRAC SPREAD



CME Future Prices

Ethane (C2)

Non-LDH— Mont Belvieu

Month	Close	Change
Jun-17	0.258	0.001
Jul-17	0.261	0.001
Aug-17	0.264	0.001
Sep-17	0.268	0.001
Oct-17	0.272	0.001
Nov-17	0.276	0.001
Dec-17	0.279	0.001
Jan-18	0.283	0.001
Feb-18	0.293	(0.001)
Mar-18	0.293	0.002
Apr-18	0.292	0.002
May-18	0.286	0.001

1YR Strip 0.277 0.001

CME Future Prices

Propane (C3)

Non-LDH— Mont Belvieu

Month	Close	Change
Jun-17	0.634	0.005
Jul-17	0.635	0.008
Aug-17	0.638	0.009
Sep-17	0.643	0.009
Oct-17	0.651	0.009
Nov-17	0.657	0.009
Dec-17	0.662	0.010
Jan-18	0.667	0.010
Feb-18	0.673	0.011
Mar-18	0.663	0.012
Apr-18	0.612	0.014
May-18	0.579	0.014

1YR Strip 0.643 0.010

# NATURAL GAS NEWS



## Prompt WTI (CL) Crude

### Daily Sentiment

**NEUTRAL**



RESISTANCE

48.07 & 48.81

SUPPORT

46.30 & 45.27

### FOLLOW US ON TWITTER:



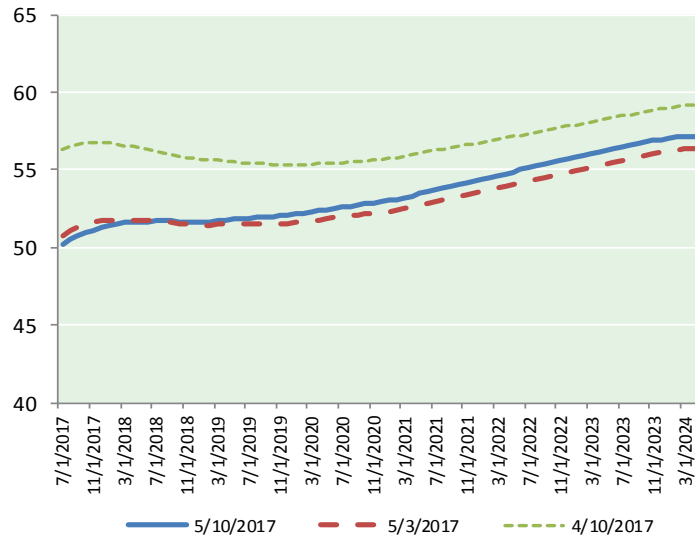
@MPG\_NatGasNews

## NYMEX Brent (BZ)

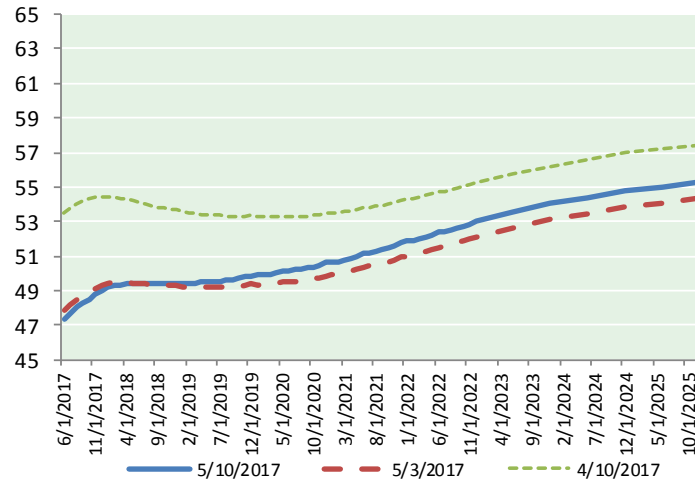
### Futures

Month	Close	Change
Jul-17	50.22	1.49
Aug-17	50.54	1.43
Sep-17	50.76	1.38
Oct-17	50.95	1.34
Nov-17	51.11	1.29
Dec-17	51.27	1.24
Jan-18	51.39	1.21
Feb-18	51.49	1.18
Mar-18	51.58	1.16
Apr-18	51.63	1.13
May-18	51.66	1.10
Jun-18	51.67	1.07
Jul-18	51.70	1.05
Aug-18	51.72	1.02
Sep-18	51.71	1.00
Oct-18	51.68	0.98
Nov-18	51.65	0.96
Dec-18	51.64	0.94
Jan-19	51.65	0.92
Feb-19	51.68	0.91
Mar-19	51.72	0.90
Apr-19	51.78	0.88
May-19	51.81	0.86
Jun-19	51.83	0.84
1YR Strip 2017	51.19	1.25
5YR Strip	50.81	1.36
	52.53	0.82

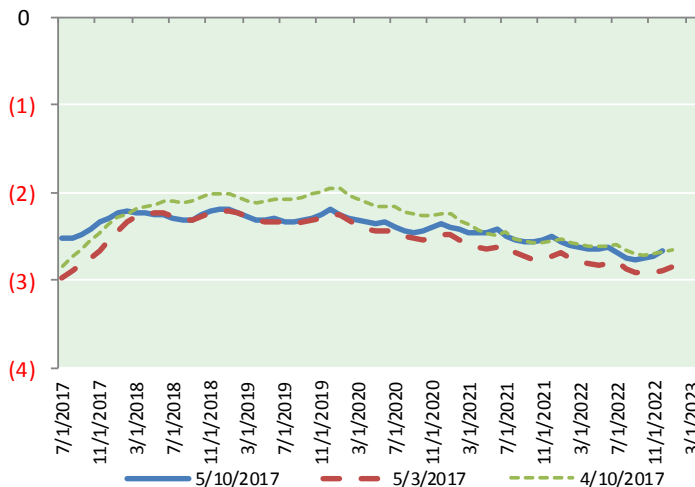
## BRENT CRUDE FORWARD CURVE



## WTI CRUDE FORWARD CURVE



## WTI-BRENT SPREAD



## FRAC Spread

### Specifications

Ethane : 42%	66,500 btu/g
Propane: 28%	90,830 btu/g
Butane: 11%	102,916 btu/g
Iso-Butane: 6%	98,935 btu/g
Natural Gasoline: 13%	115,021 btu/g

## Prompt NGL Futures

### (\$/gallon)

	Jun-17	Close	Change
Butane	0.784	0.014	
Iso-Butane	0.761	0.007	
Nat Gasoline	1.053	0.019	

## NYMEX WTI (CL) Futures

Month	Close	Change
Jun-17	47.33	1.45
Jul-17	47.70	1.43
Aug-17	48.02	1.40
Sep-17	48.29	1.37
Oct-17	48.53	1.33
Nov-17	48.77	1.29
Dec-17	48.98	1.25
Jan-18	49.16	1.22
Feb-18	49.28	1.19
Mar-18	49.35	1.16
Apr-18	49.39	1.14
May-18	49.41	1.12
Jun-18	49.42	1.10
Jul-18	49.41	1.09
Aug-18	49.40	1.08
Sep-18	49.40	1.07
Oct-18	49.42	1.06
Nov-18	49.44	1.05
Dec-18	49.46	1.03
Jan-19	49.46	1.02
Feb-19	49.45	1.00
Mar-19	49.45	0.98
Apr-19	49.47	0.97
May-19	49.49	0.95
1YR Strip 2017	48.68	1.28
5YR Strip	48.23	1.36
	50.07	0.89